

NC Department of Health and Human Services

Presentation Title


Brittney Black & Rebecca Evans
Counselor in Charge Unit Manager

November 10, 2021

1

Vocational Rehabilitation -

- ☆ Mission of vocational rehabilitation (VR)
- ☆ What does VR do for clients?
- ☆ Who is eligible for VR services?
- ☆ How does the VR process work?
- ☆ Overview of VR services for adults
- ☆ Overview of VR services for youth and students



NCDHHS | Division of Vocational Rehabilitation Services | Vocational Rehabilitation 101

2

Mission of Vocational Rehabilitation

To promote employment and independence for people with disabilities through customer partnership and community leadership.




NCDHHS | Division of Vocational Rehabilitation Services | Vocational Rehabilitation 101

3

What does VR do?

partners on the path to your career

- VR helps individuals with disabilities (14+)
 - Prepare for work
 - Find a job
 - Return to work
 - Keep a job
 - Advance in employment
- VR's focus: abilities and new possibilities
 - Exploring interests, abilities and aptitudes
 - Establishing an employment goal
 - Planning services and supports to achieve goal



NCDHHS | Division of Vocational Rehabilitation Services | Vocational Rehabilitation 101

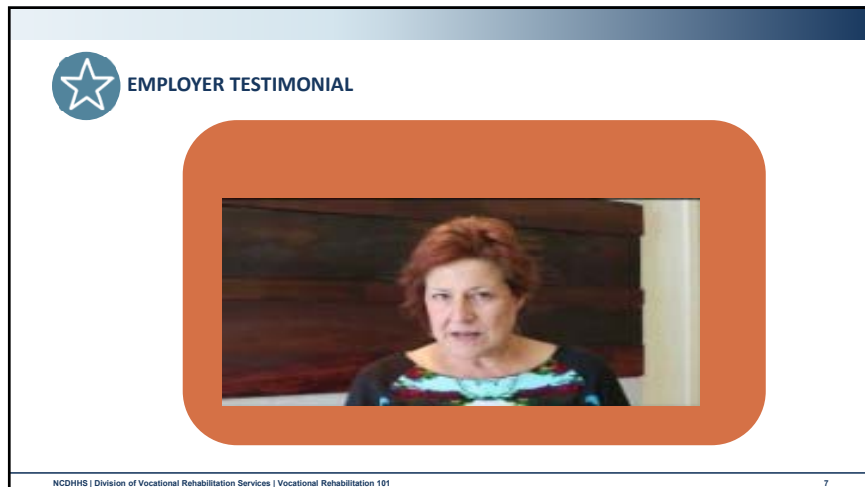
4



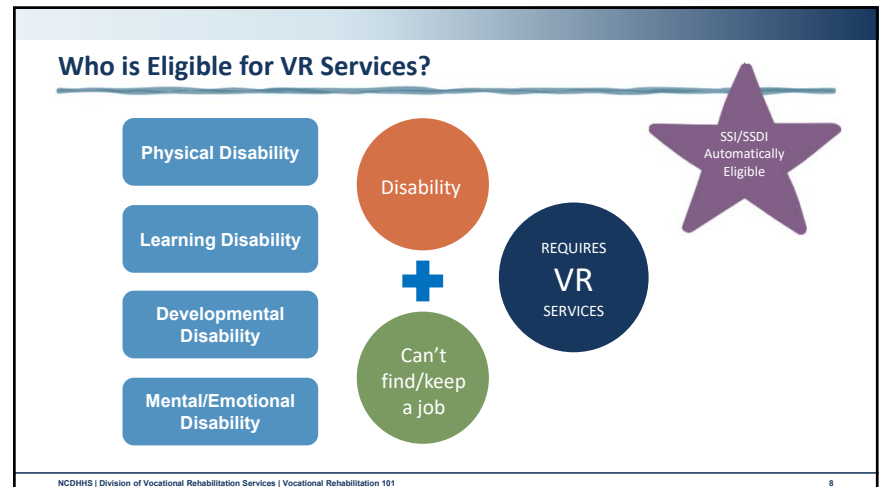
5




6



7




8



QUESTIONS TO CONSIDER

- What category does the disability fall in?
- What professional specializes in the diagnosis/treatment?
- What kind of impairments are associated with the disability?




DISABILITY CATEGORIES










- Physical
- Cognitive & Developmental
- Mental Health & Substance abuse
- Hearing Loss & Vision Loss

NCDHHS | Division of Vocational Rehabilitation Services | Vocational Rehabilitation 101 9

9



PHYSICAL DISABILITIES

<ul style="list-style-type: none">  Amputations <ul style="list-style-type: none"> • Family medicine, internist • Orthopedic, physiatrist  Arthritis <ul style="list-style-type: none"> • Rheumatologist, Family Medicine, Internist • Orthopedic, Physiatrist  Cerebral Palsy <ul style="list-style-type: none"> • Neurologist, Family Medicine, Internist • Orthopedic, Physiatrist, Pediatrician  Endocrine Disorders <ul style="list-style-type: none"> • Endocrinologist, Family Medicine • Internist, Gastroenterologist  End Stage Renal disease <ul style="list-style-type: none"> • Nephrologist, Internist, Family Medicine 	<ul style="list-style-type: none">  Heart/Circulatory <ul style="list-style-type: none"> • Cardiologist, Family Medicine • Internist, Cardiac surgeon  Neurological <ul style="list-style-type: none"> • Neurologist, Neurosurgeon, Neuropsychologist • Psychiatrist, Physiatrist, Internist, Family Medicine  Orthopedic Disorders <ul style="list-style-type: none"> • Orthopedist, Physiatrist, Neurosurgeon • Neurologist, Rheumatologist, Family Medicine, Internist  Traumatic Brain Injury <ul style="list-style-type: none"> • Neurologist, Neurosurgeon, Neuropsychologist • Physiatrist, Internist, Family Medicine
--	---

NCDHHS | Division of Vocational Rehabilitation Services | Vocational Rehabilitation 101 10

10




COGNITIVE & DEVELOPMENTAL DISABILITIES



-  **Autism**
 - Psychologist, Psychiatrist, Neurologist
 - Licensed Psychological Associate, Neuropsychologist, Neuropsychiatrist
-  **ADD/HD**
 - Psychologist, Psychiatrist, Neurologist
 - Licensed Psychological Associate
 - Neuropsychologist, Physiatrist, Family Medicine
-  **Borderline Intellectual Functioning**
 - Psychologist
 - Licensed Psychological Associate
-  **Intellectual Disability**
 - Psychologist, Psychiatrist, school psychological with IEP
 - Licensed Psychological Associate
-  **Learning Disorder**
 - Psychologist, school psychological with IEP
 - Licensed Psychological Associate

NCDHHS | Division of Vocational Rehabilitation Services | Vocational Rehabilitation 101 11

11



MENTAL HEALTH AND SUBSTANCE ABUSE

-  **Alcohol & Substance Use**
 - Psychologist, Psychiatrist,
 - Licensed Psychological Associate
 - Licensed Clinical Addiction Specialist
-  **Mental & Emotional Conditions**
 - Psychologist, Psychiatrist
 - Licensed Psychological Associate

NCDHHS | Division of Vocational Rehabilitation Services | Vocational Rehabilitation 101 12

12

★ HEARING LOSS & VISION LOSS

Hearing Disorders

- Speech & hearing center
- Licensed Audiologist
- Ear, Nose & Throat Specialist

Visual disorders

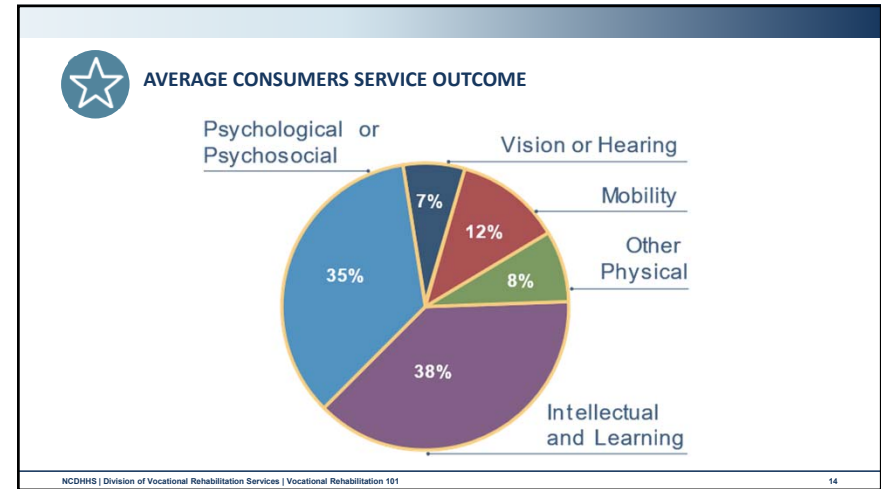
- Ophthalmologist
- Optometrist
- Neuro-ophthalmologist

Speech Disorders

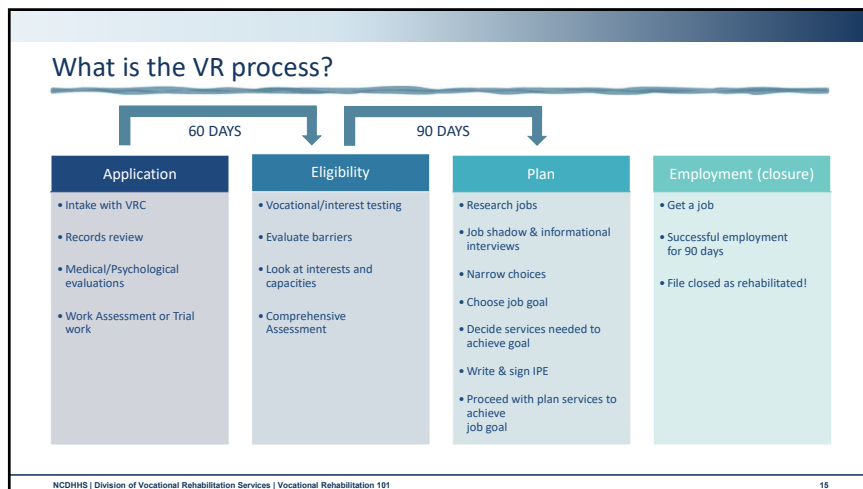
- Speech Pathologist
- Speech Therapist-w/prescription from speech pathologist
- Psychologist (if mental health disorder)

NCDHHS | Division of Vocational Rehabilitation Services | Vocational Rehabilitation 101 13

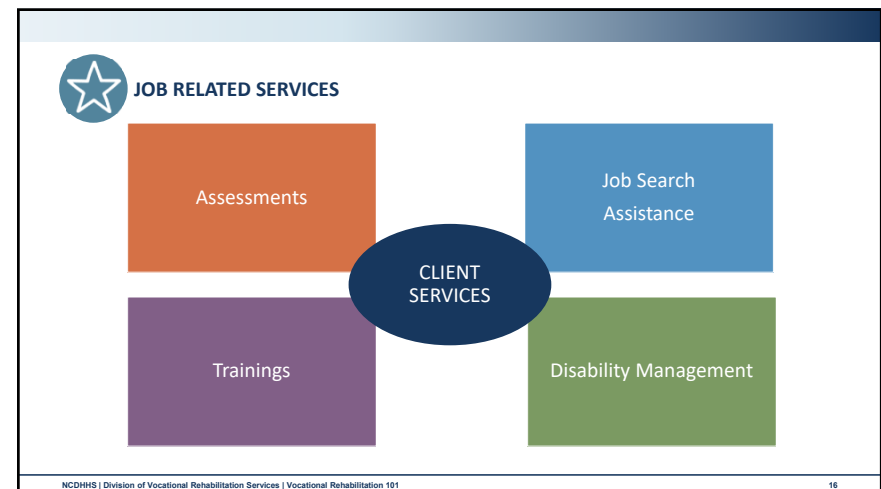
13



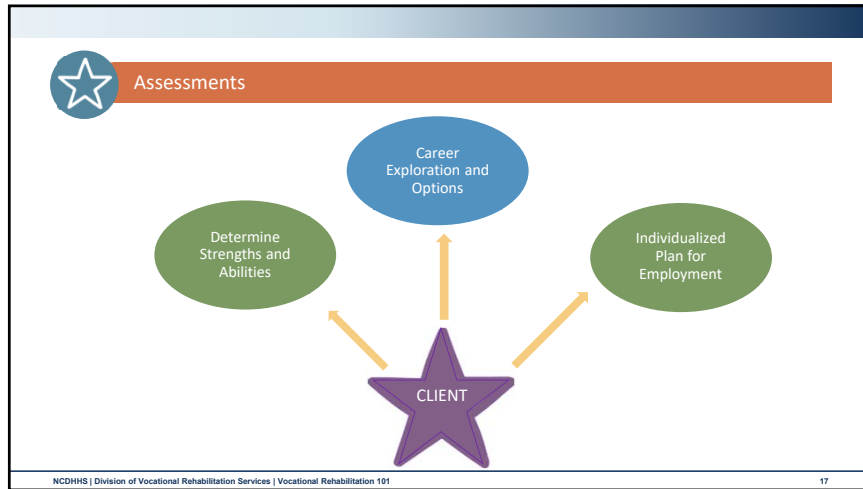
14



15



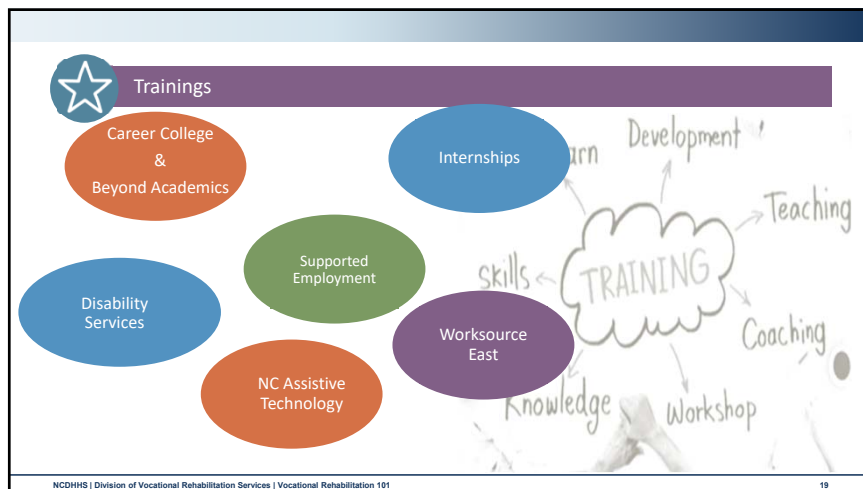
16



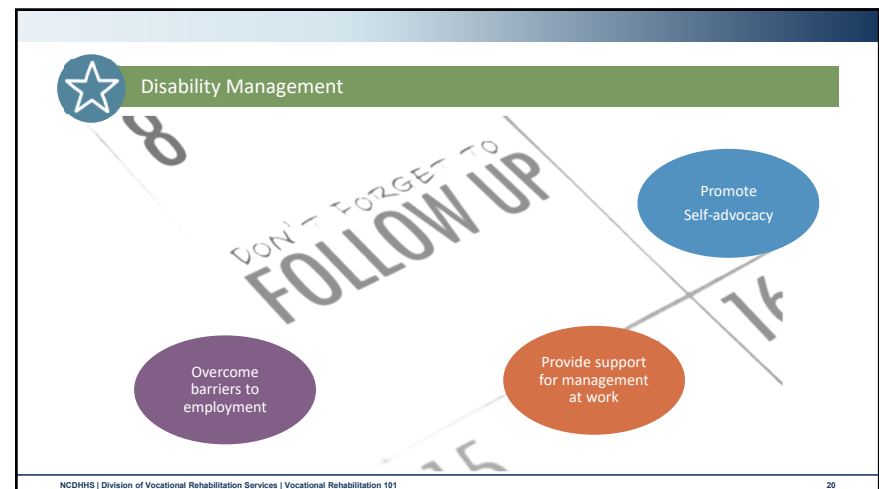
17



18



19



20

Pre-Employment Transition Services for Youth (Pre-ETS)

Empower youth with disabilities to maximize employment, independence and full inclusion in society

Workplace Readiness

Self-Advocacy

Job Exploration

Post-Secondary Education

Work-Based Learning

SKILLS

INTERNSHIP

EXPERIENCES

NCDHHS | Division of Vocational Rehabilitation Services | Vocational Rehabilitation 101

21

CLIENT TESTIMONIAL

NCDHHS | Division of Vocational Rehabilitation Services | Vocational Rehabilitation 101

22

Focus on an individual's abilities, their unique talents and strengths.

NCDHHS | Division of Vocational Rehabilitation Services | Vocational Rehabilitation 101

23

Questions

VR Counselor's Info:

- Brittney Black
- Counselor in Charge
- Brittney.Black@dhhs.nc.gov
- 336-438-4219 or 336-290-0641

Steps for VR services:

- Call 336-290-0600
- Fax referral to 336-290-0630
- Send encrypted email to Brittney

NCDHHS | Division of Vocational Rehabilitation Services | Vocational Rehabilitation 101

24